

Superfund 101 Workshop



Speakers



Codi Norred
Program Director
Georgia Interfaith Power And Light



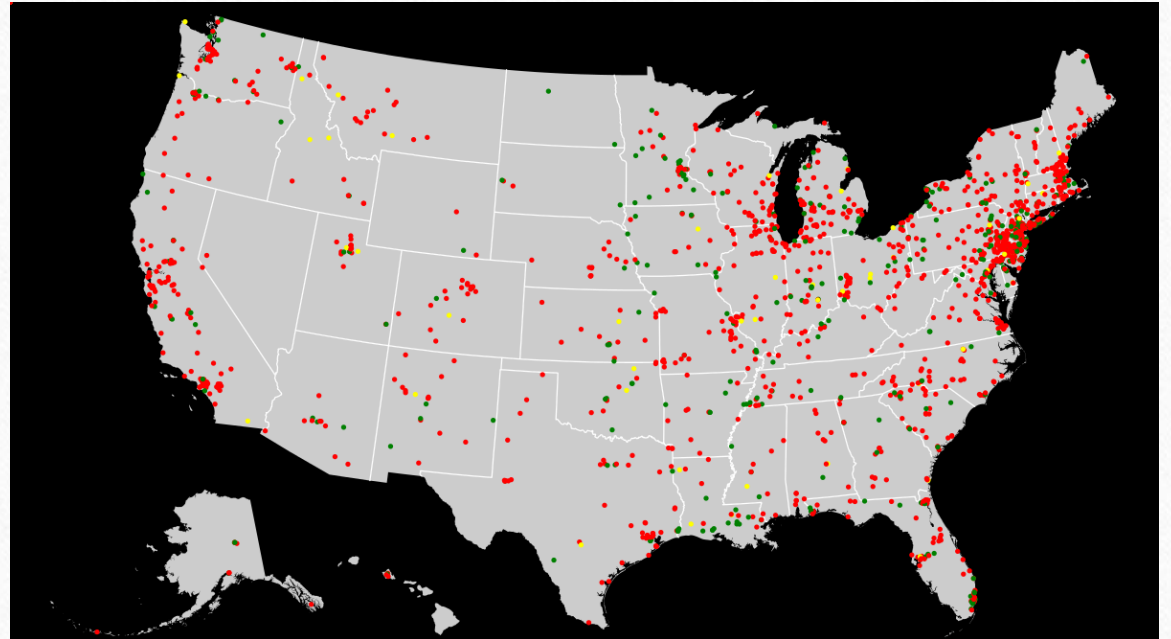
Rachael Thompson
Executive Director
Glynn Environmental Coalition

Agenda

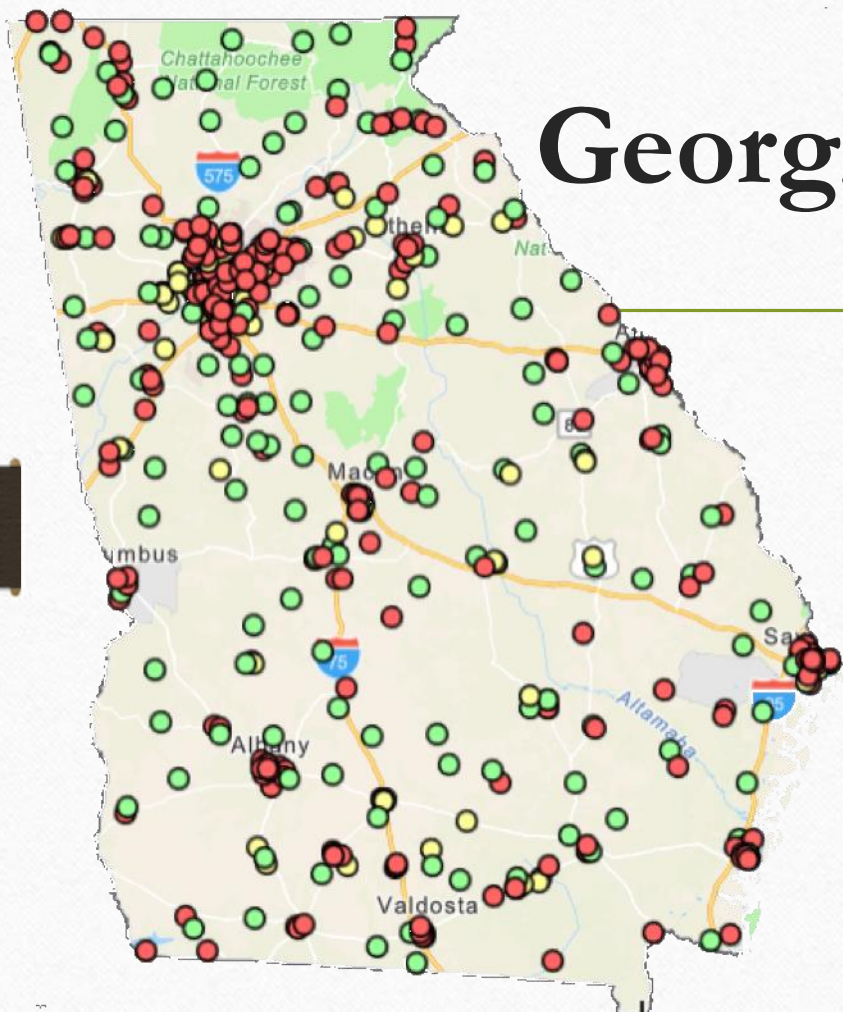
- Agenda - Why Are We Here?
- Superfund Process Overview
- Georgia's Superfund Sites
- What can you do?
- Q & A

What is 'Superfund'?

- Comprehensive Environmental Response, Compensation and Liability Act (1980)
 - ↳ Also known as the Superfund Program



Georgia's Hazardous Waste Sites



500

State Hazardous Waste Sites

→ cleanup managed by the Georgia Environmental Protection Division (EPD) and the 'Responsible Party'

16

National Priorities List sites

→ cleanup managed by the EPA through the Superfund Program and the 'Responsible Party', oversight provided by the State



- **Step 1: Investigate!**

An investigation intended to gather the data necessary to determine the nature and extent of contamination at site, establish cleanup goals, and estimate risks posed by the contamination.





- **Step 2: Consider the cleanup options.**

Identifies potential cleanup technologies, evaluate options, and develop conceptual designs and cost estimates.





- **Step 3: Propose the cleanup plan(s).**

Provides an analysis of cleanup alternatives under consideration, identifies EPA's preferred method, and provides *public participation opportunity*.





- **Step 4: Select a Plan**

Announcement and explanation of what cleanup plan has been selected.

- **Step 5: Lodge the decision with the court**

Binding agreement specifying how the site is going to be cleaned up.





- **Step 6: Time to start cleaning up!**

Remedial action plan is outlined to determine final details for construction. Can take up to 18 to 24 months depending on difficulty of cleanup. Then construction begins.



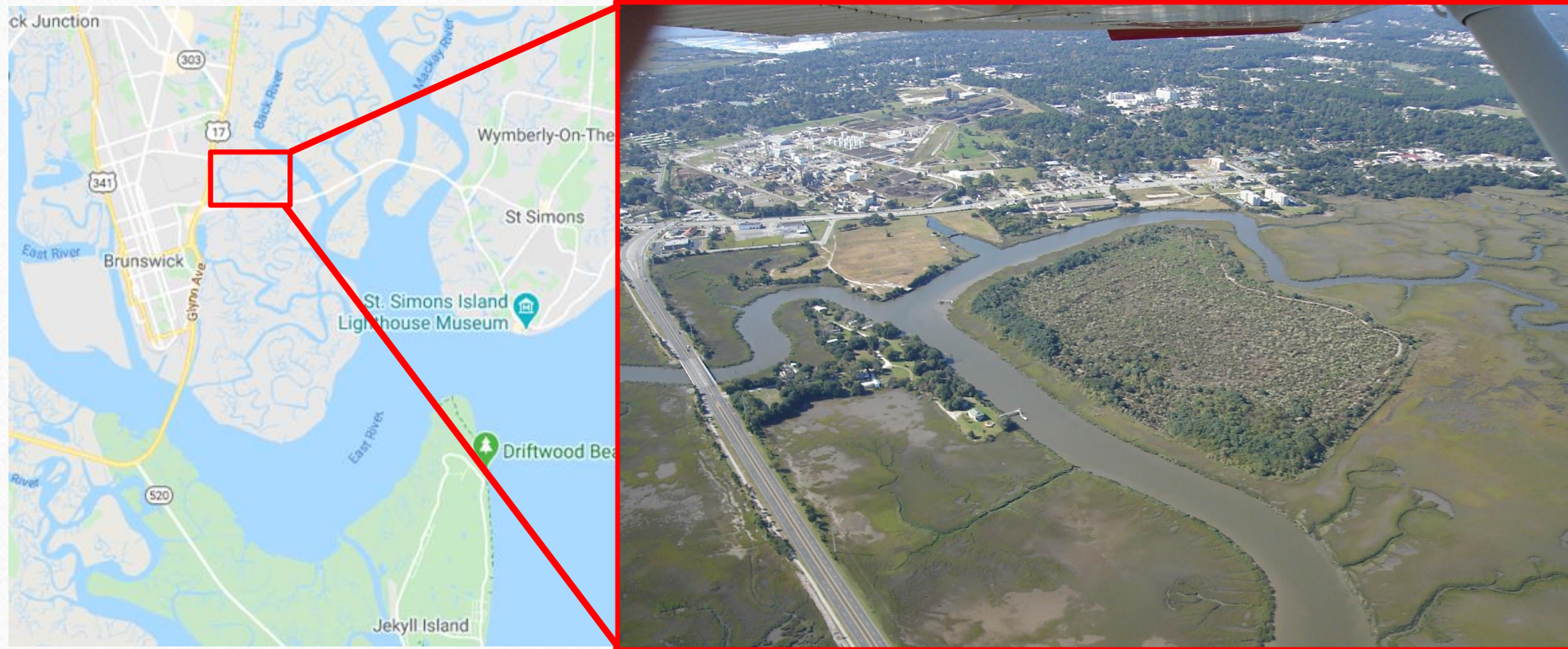


Superfund Sites in Glynn County

Site Name*		Next Steps
Brunswick Wood Preserving		Five Year Review Estimated Aug - Oct 2022
Hercules 009 Landfill		Five Year Review Estimated Sep - Nov 2021
Terry Creek Dredge Spoils Area/Hercules Outfall (Proposed NPL)		Operable Unit 1 (Outfall Ditch) - Remedial Design Estimated Completion Jun - Aug 2021
LCP Chemicals	<ul style="list-style-type: none">• Operable Unit 1 (Marsh) - Remedial Design Estimated Completion Early 2021• Operable Unit 2 (Cell Buildings and Groundwater) – Remedial Investigation Ongoing• Operable Unit 3 (Soils) - Record of Decision Estimated Fall 2020	

*Click on the links to find more information on the site.

Terry Creek Superfund Site



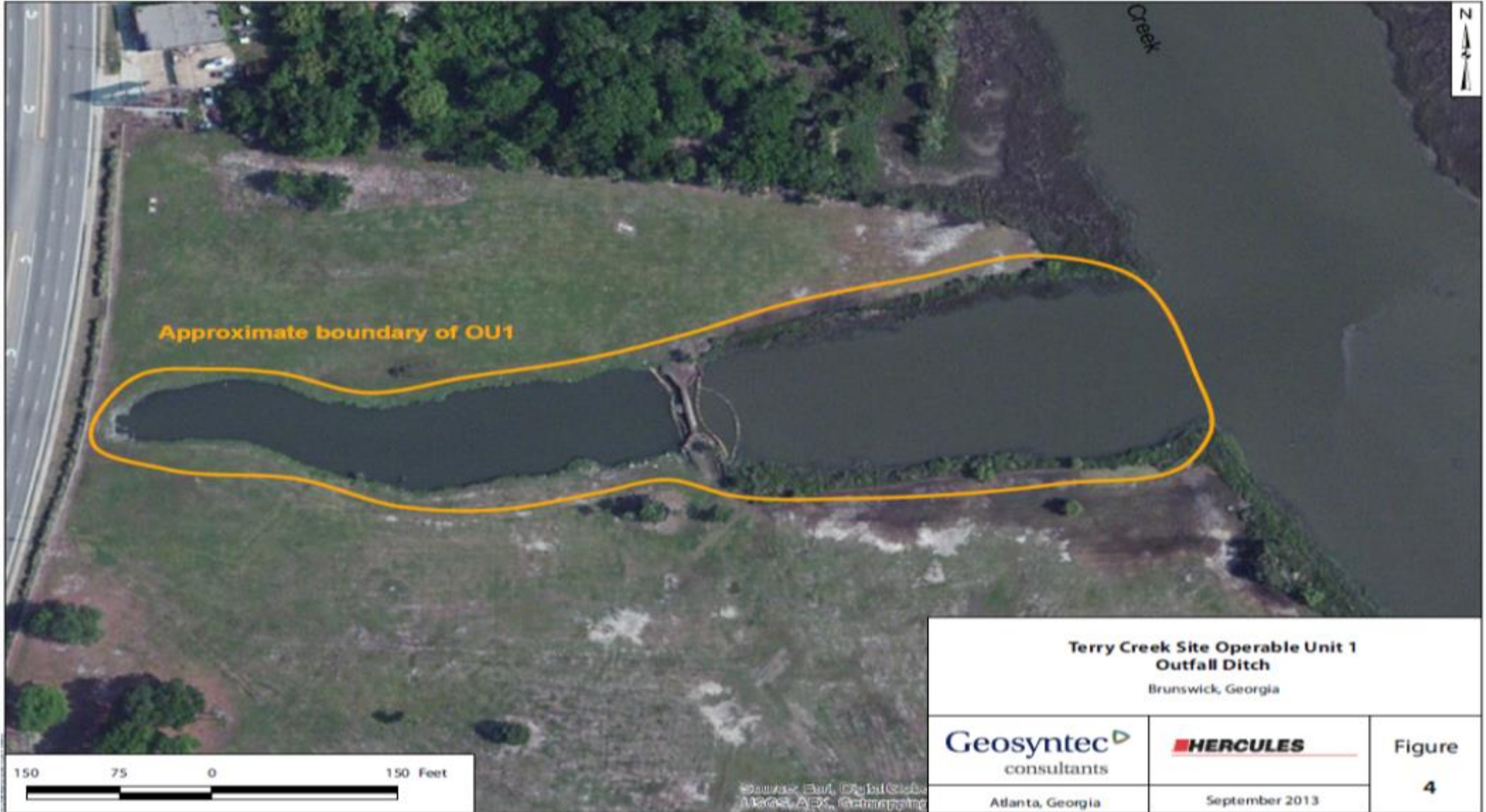


- Former Wastewater Discharge from Hercules Toxaphene Plant 1940s-1980s
- Pesticide Banned in 1990, Residual Toxaphene Widespread along Coast

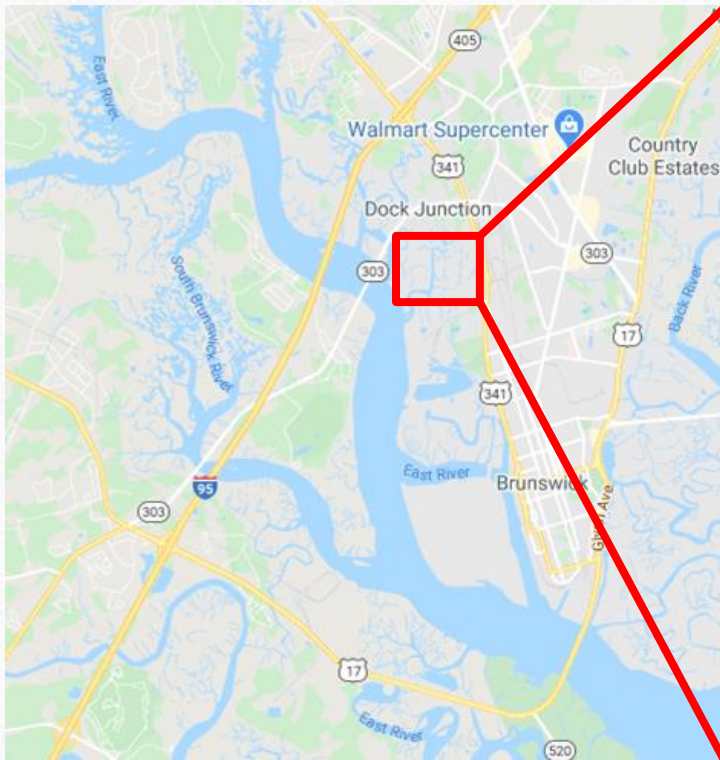
Past and Current Activities

- 35,000 Cubic Yards Contaminated Sediment Removed by 2000
- Next Step – Outfall Ditch Remediation
 - Remove Contaminated Sediment
 - Backfill, Cover, Stabilize Old Ditch
 - Build New Concrete-lined Ditch
 - Long-term Operations and Maintenance with Institutional Controls
- Design by June 2021, Construction by end of 2021, Complete August 2022





LCP Chemicals Superfund Site



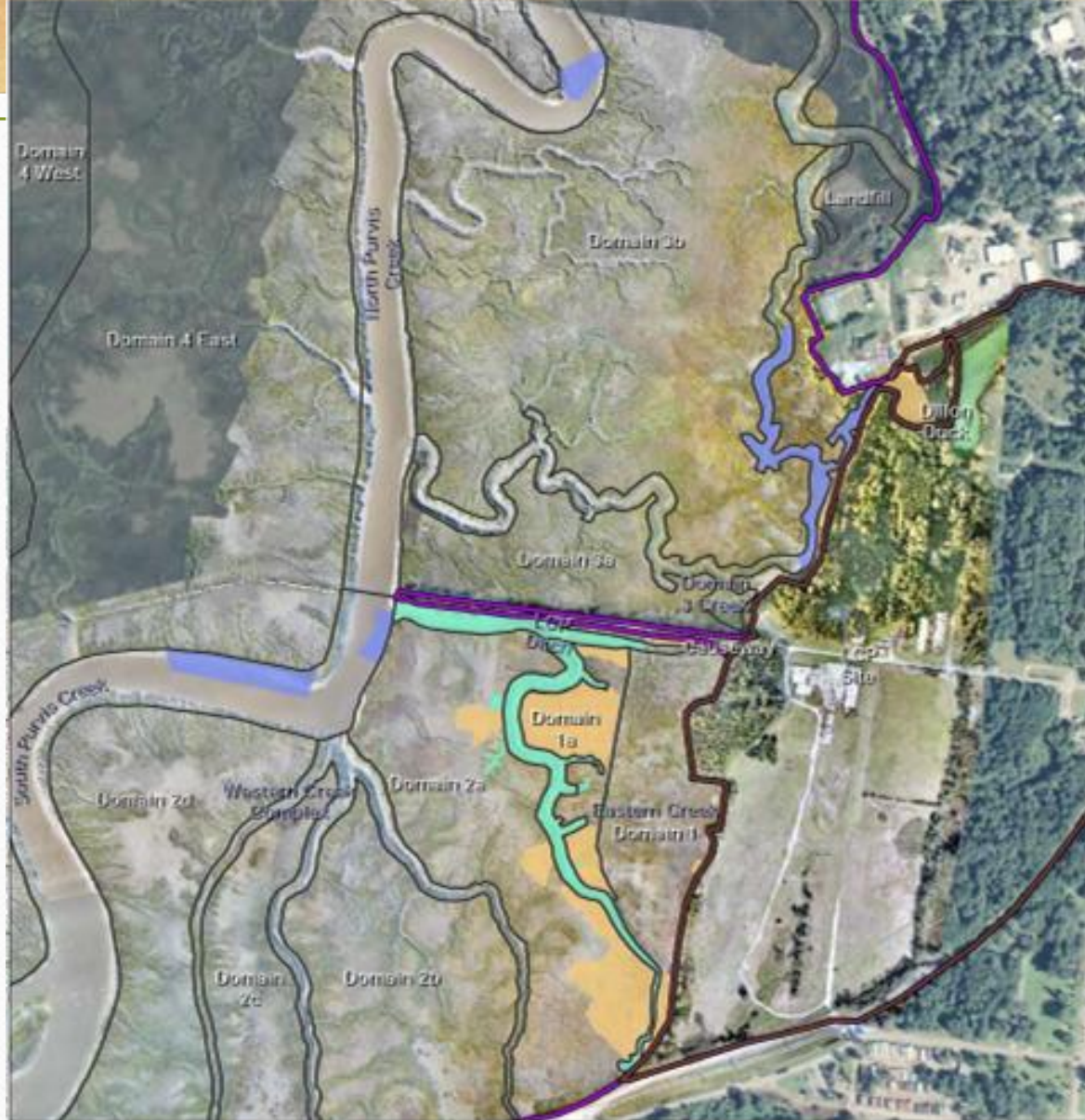




- Former Industrial Plant – 100 years of Petroleum, Chemicals, Paints
- Soil, Marsh, Ground Water Contaminated by Numerous Chemicals
 - Mercury
 - PCBs (Polychlorinated Biphenyls)
 - PAHs (Polycyclic Aromatic Hydrocarbons)

LCP Chemicals Site Investigations

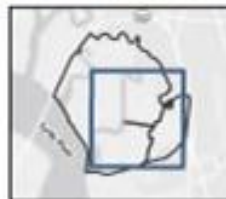
- Honeywell Investigations and Cleanups since 1990s
 - 130,000 Cubic Yards Industrial Wastes Removed
 - Designing Sediment Dredging, Caps and Covers for Residual Marsh Contaminants
 - Site-wide Soil and Ground Water Contamination *Almost* Defined
- Uplands Soils final cleanup plan proposed in 2018
- Ground Water, Cell Buildings, and Marsh cleanups are ongoing



Remediation Areas

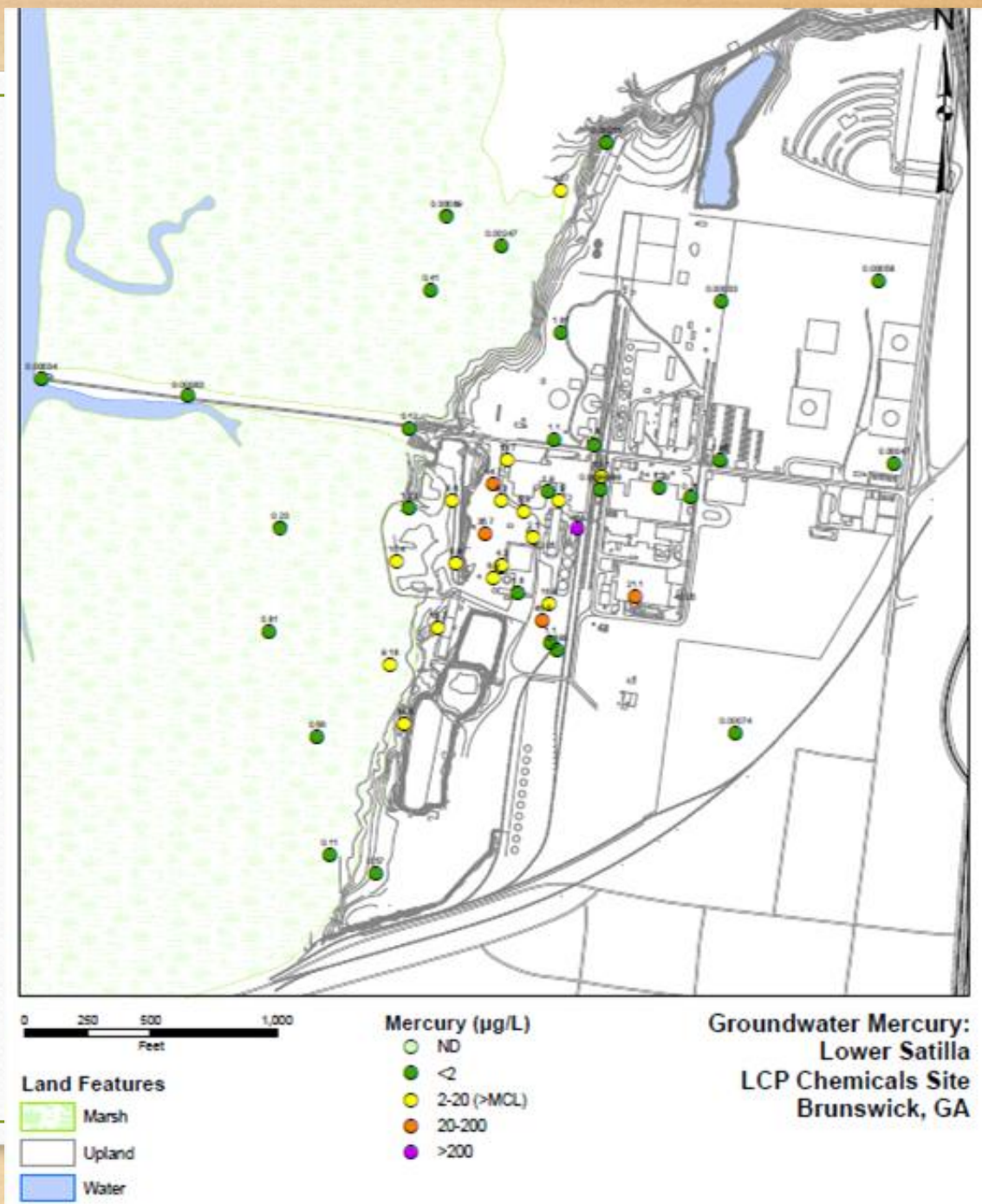
- | | |
|--|--|
| ■ Cap | ■ OU1 Boundary |
| ■ Dredge | ■ OU3 Boundary |
| ■ Thin Cover | ■ Creek/Domain Boundary |

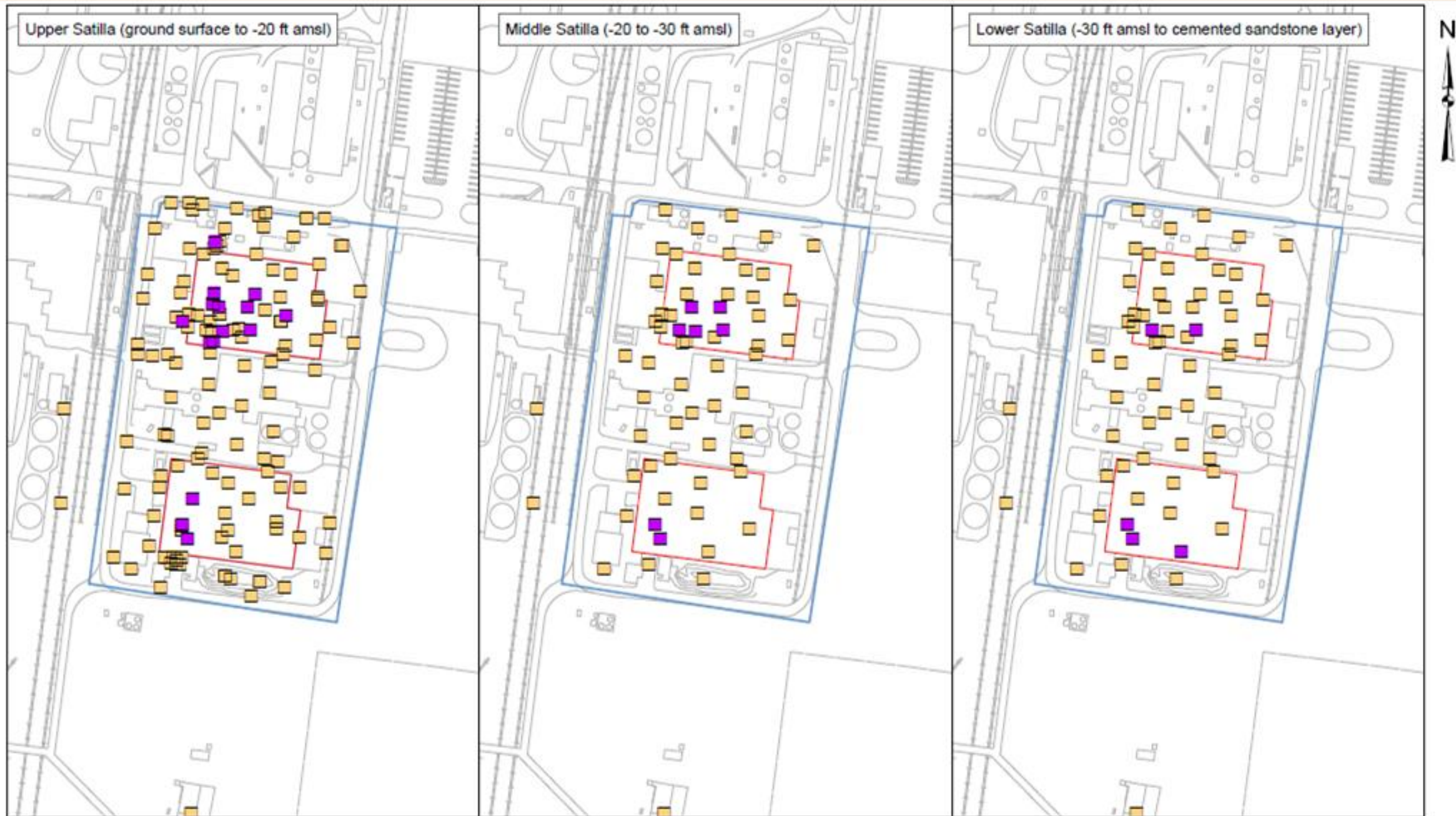
Note: Aerial imagery provided by Anchor QEA and Natural Resources Conservation Service.



- Two Types of Thin Covers Tested, Good Results
- Marsh Sediment Remedial Design Completion near the end of 2020

- Ground Water Contamination Across Site, Migrating West to Turtle River
- Liquid Mercury at Cell Buildings Area down to 50 feet below ground
- Remedial Investigation and Risk Assessment Report due around end of 2020





*Distribution of Liquid Mercury
in the Cell Building Area Subsurface*


LCP Chemicals Site
Brunswick, GA

How Can You Help?



Stay Up To Date

Contact the Community Involvement Coordinator to get added to the EPA Mailing list for each Site. All updates will get sent straight to your inbox!

 United States
Environmental Protection
Agency

Environmental TopicsLaws & RegulationsAbout EPA

Search EPA.gov

[Contact Us](#)

Superfund Site:

[Superfund Home](#)

[This Site's Home Page](#)

[Site Contacts](#)

[Cleanup Activities](#)

[Health & Environment](#)

[Stay Updated, Get Involved](#)

[Redevelopment](#)

[Site Documents & Data](#)

[View Site on Map](#)

BRUNSWICK WOOD PRESERVING BRUNSWICK, GA

Site Contacts

Do you still have questions about the site? If so, reach out to us.

Community Involvement Coordinator:
[Angela Miller](#)
(404) 562-8561

Remedial Project Manager:
[BRIAN FARRIER](#)
(404) 562-8952

[Superfund Home](#) | [Superfund Site Search](#) | [Superfund Glossary](#)

Contact your Elected Officials

FIND YOUR
REPRESENTATIVES

My Reps

Enter your address to **find and contact** your federal, state, county and local elected representatives

Enter your address to find who represents you

Search

Find me

Show level of government: ☒ Local ☒ County ☒ State ☒ Federal

About

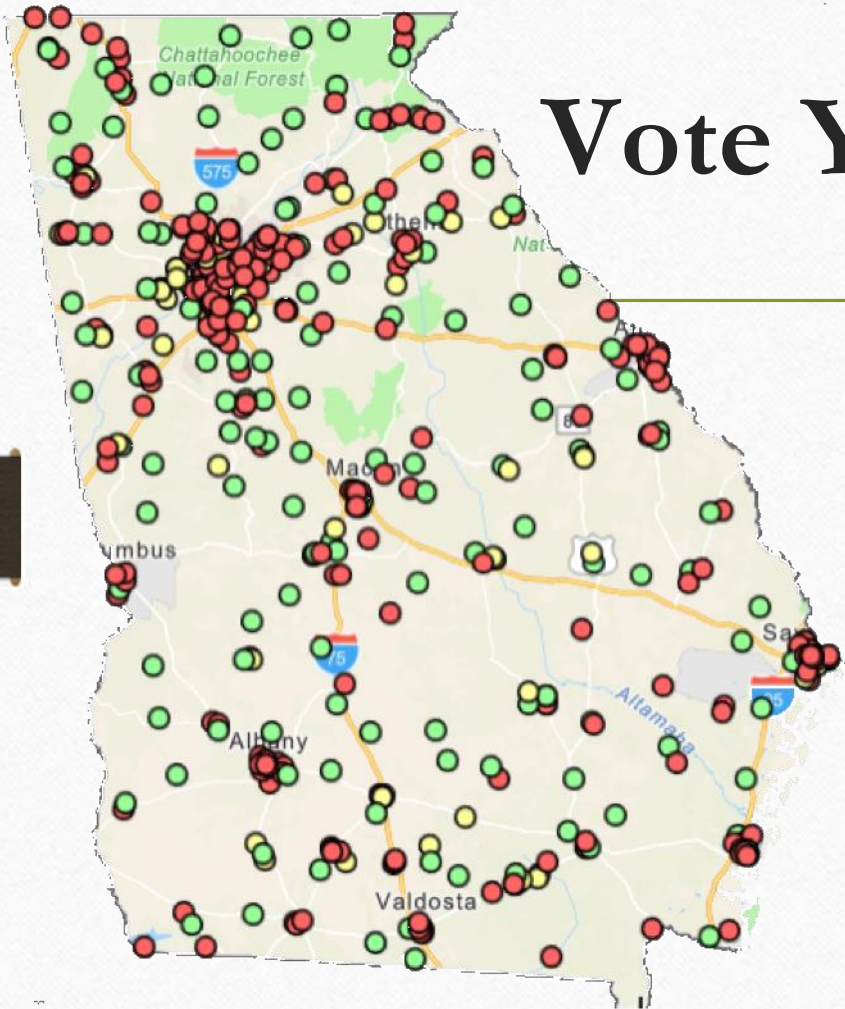
This is a tool for looking up who your **elected representatives** are across the United States. Based on your address, we can find all the federal, state, county and local officials who represent you in government.

Knowing who these representatives are and contacting their offices directly is the most effective way to change how our government works.

Have an issue you care about? **Find your rep and tell them!**

[More about this project »](#)





Vote Yes ☒ To Restore The Trust

- Trust fund fees are collected by the state for various reasons.
- The fees collected are placed in the state general fund for allocation, even though the bill creating the fee may say differently.
- This ballot measure proposes an amendment to the Georgia Constitution that would ensure fees dedicated to a specific purpose are annually appropriated for that purpose.



Additional Resources

(Click on the Blue Text Below to Visit Each Resource)

-
- Visit the [EPA Superfund Homepage](#) to learn more about the Superfund Program.
 - View the [Georgia Environmental Protection Divisions Interactive map](#) to find hazardous waste sites near you.
 - [Sign up here](#) to be a Trust Fund Ballot Advocate!
 - Check out the [Glynn Environmental Coalition Technical Assistance](#) page to learn more about Glynn County's Superfund Sites.
 - [Terry Creek Superfund Site Homepage](#)
 - [LCP Chemicals Superfund Site Homepage](#)
 - [Glynn County Annual Superfund Update - January 2020](#)

Questions?

Contact Us!

Rachael Thompson

Executive Director
Glynn Environmental Coalition
(912) 466-0934

gec@glynnenvironmental.org
www.glynnenvironmental.org

Frank Anastasi

Technical Advisor
SCA Associates
(301) 309-0061

franksbiz@his.com

Codi Norred

Program Director
Georgia Interfaith Power And Light

Codi@gipl.org

Angela Miller

Community Involvement Coordinator
U.S. EPA - Region 4
(678) 575-8132

Miller.Angela@epa.gov